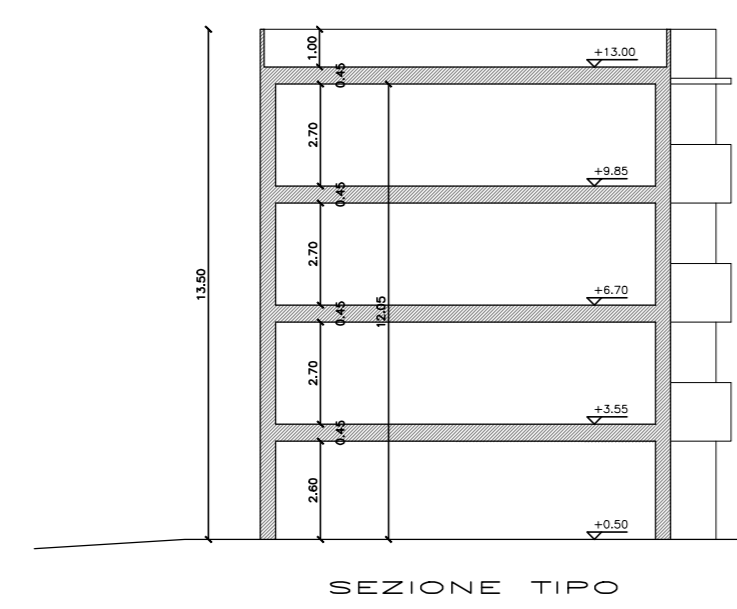
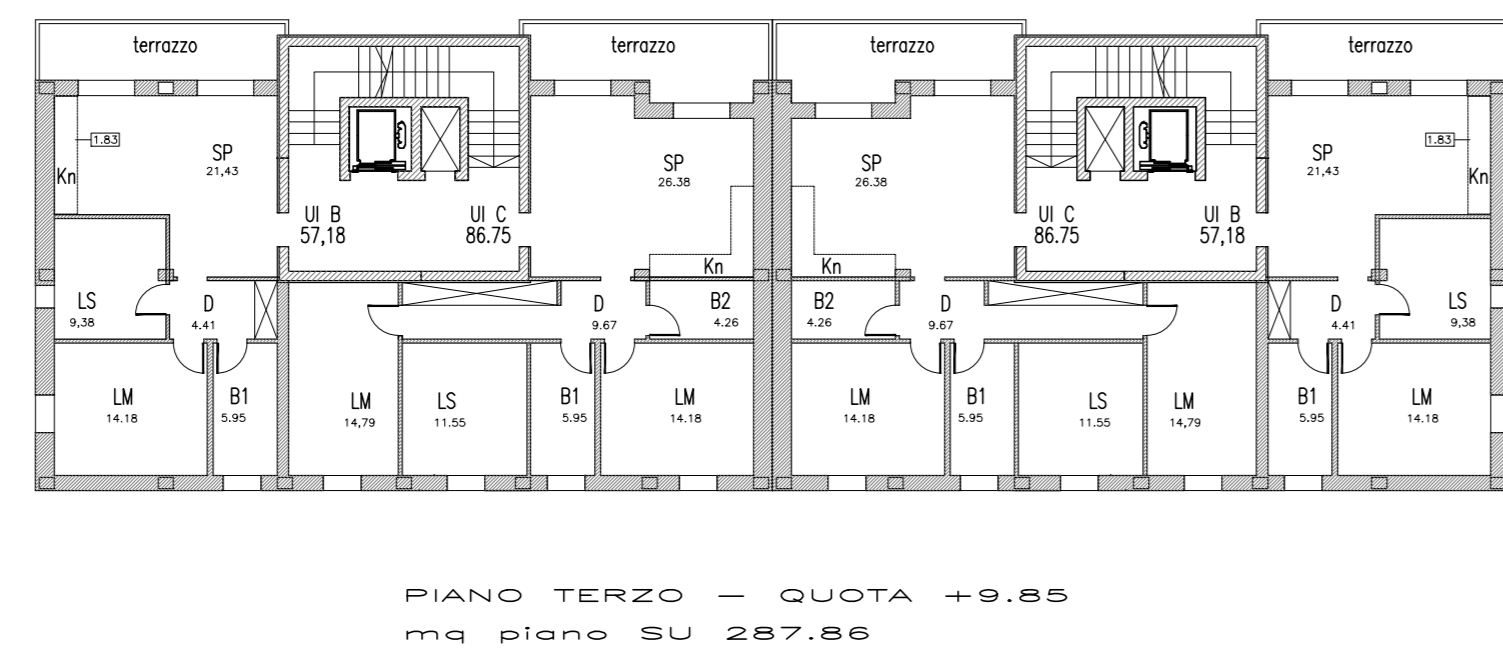
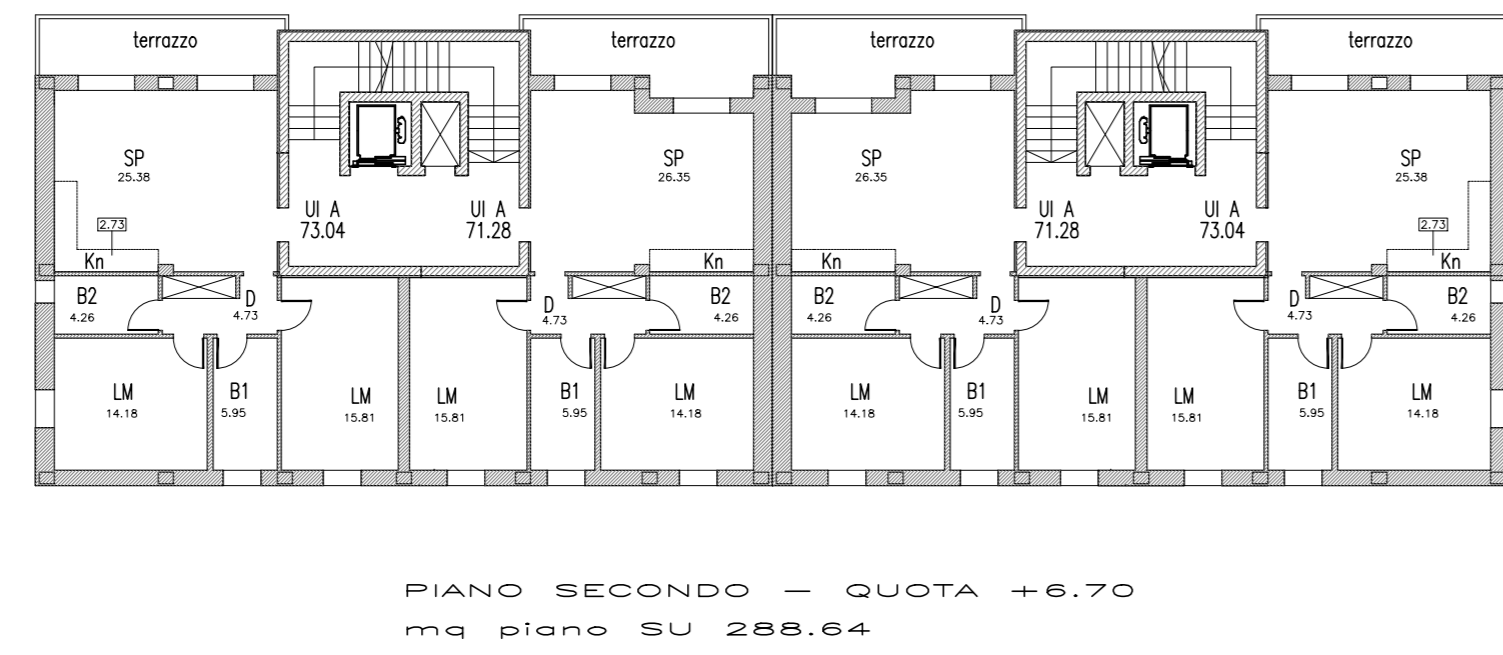
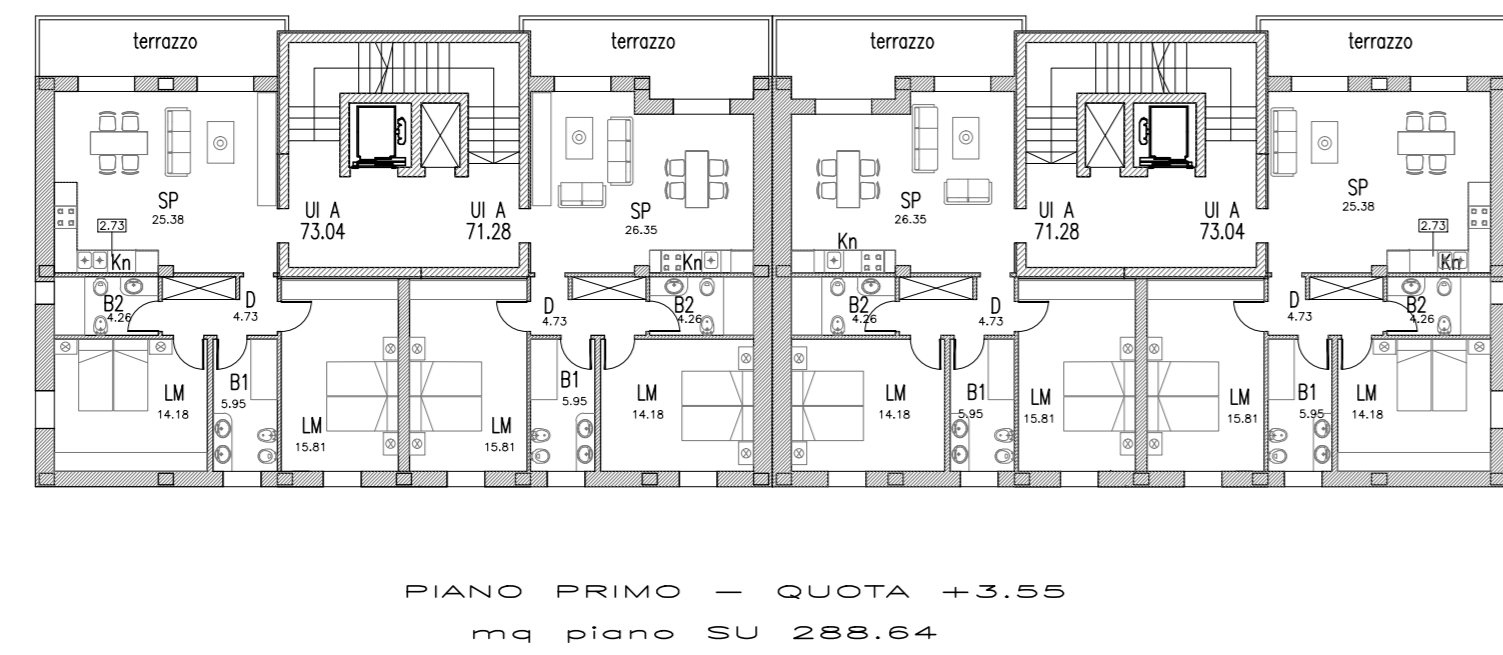
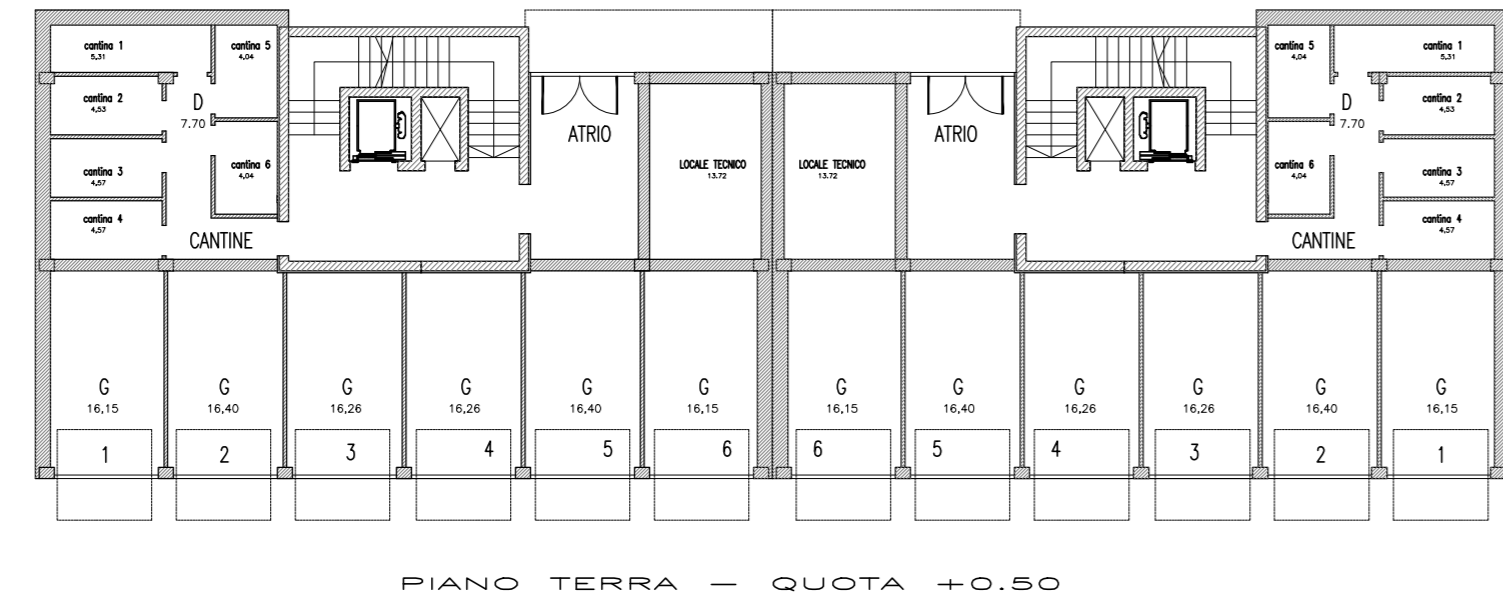
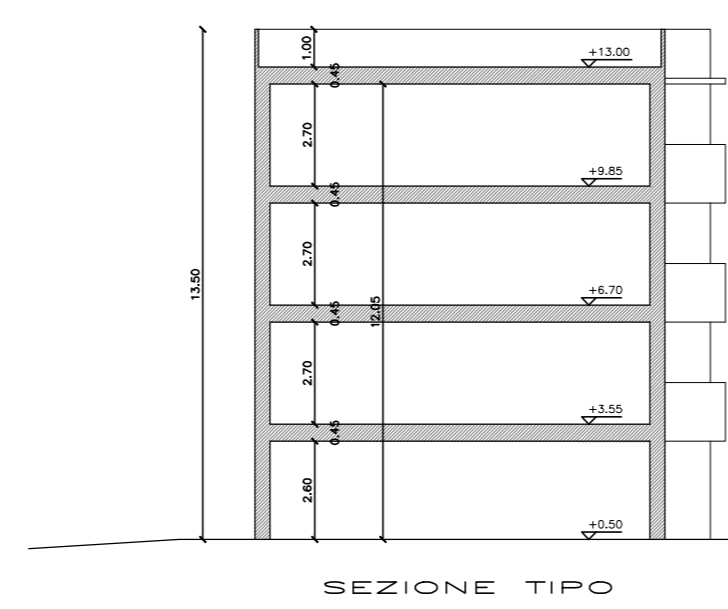
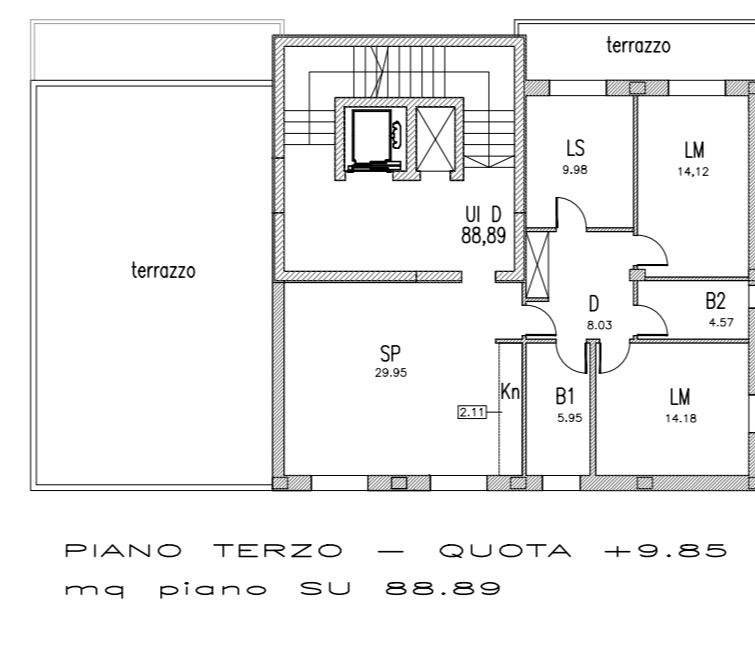
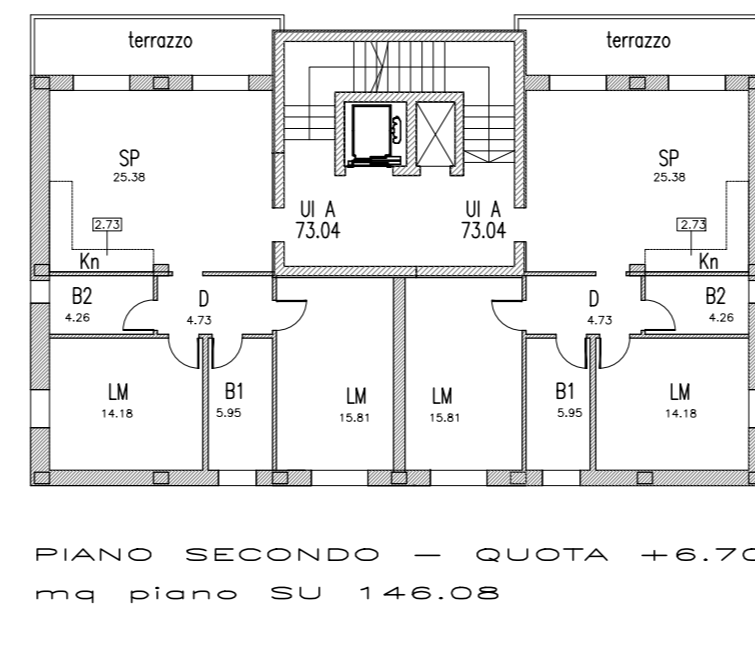
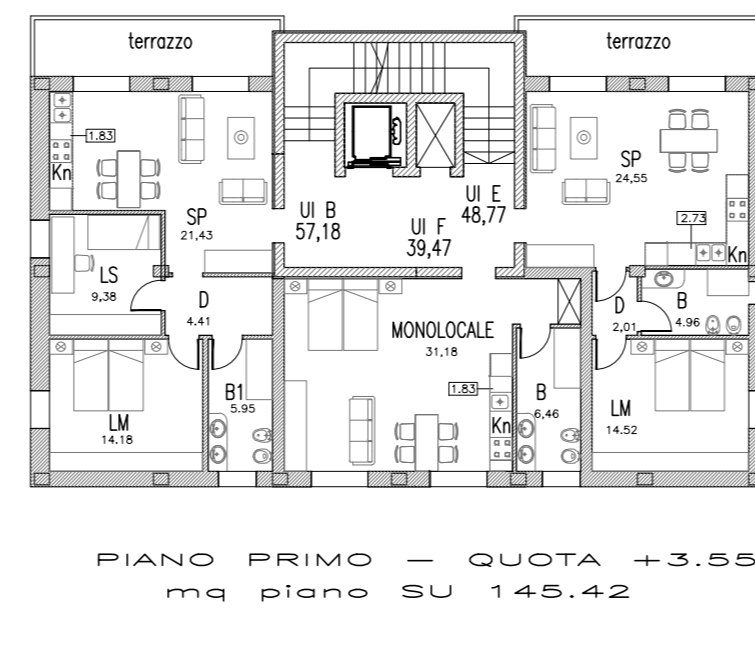
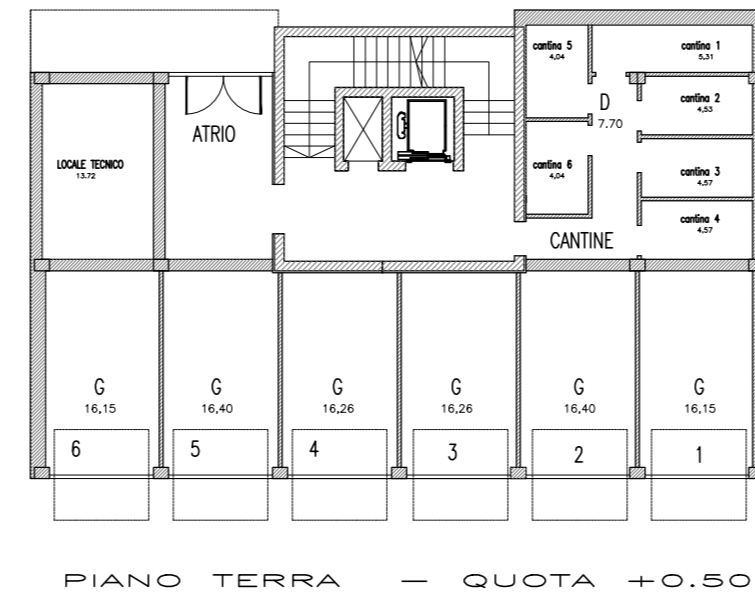


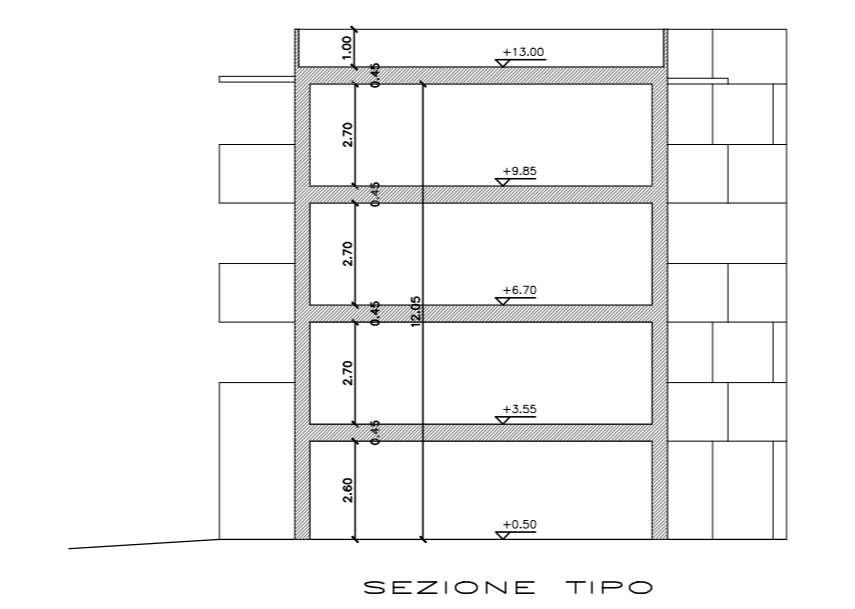
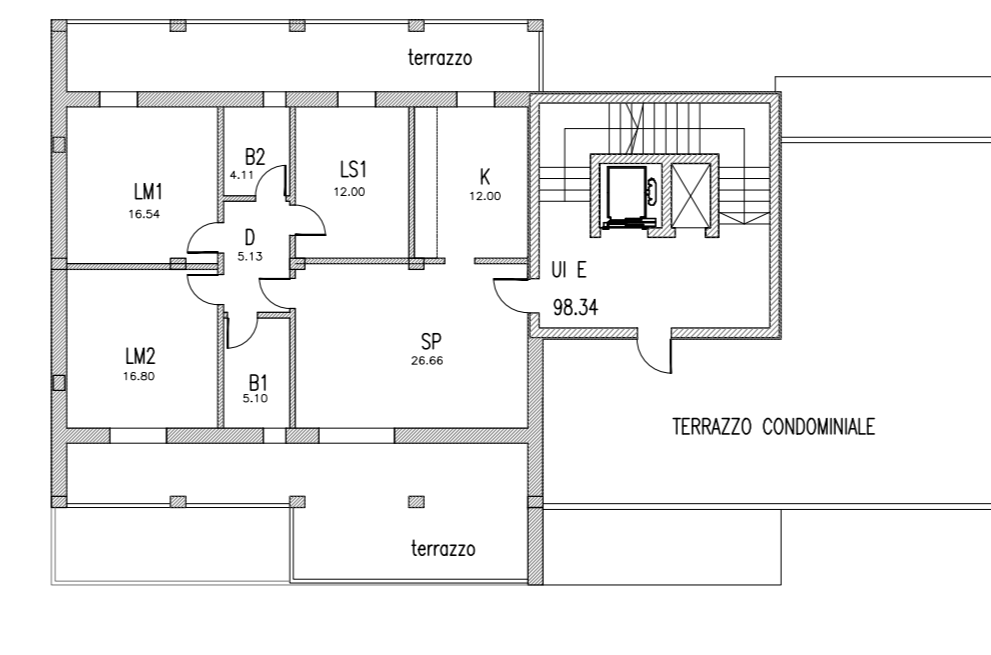
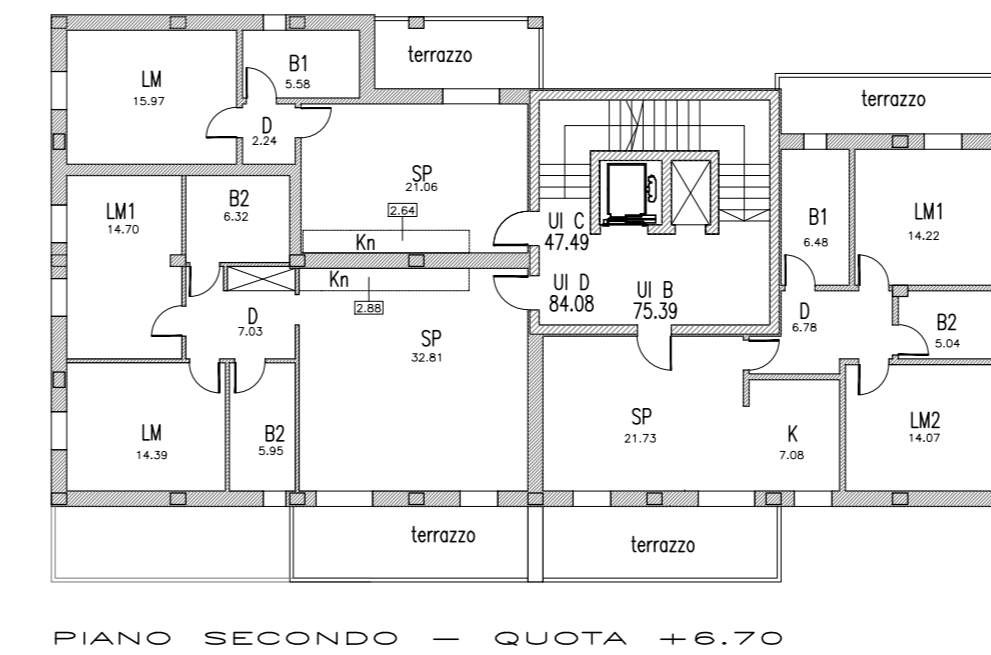
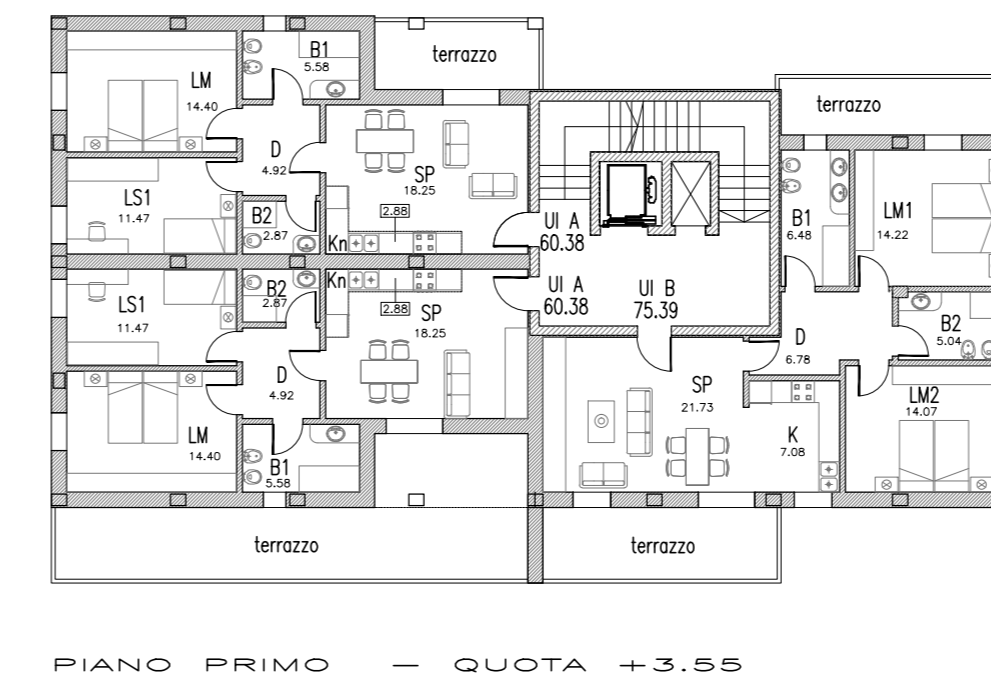
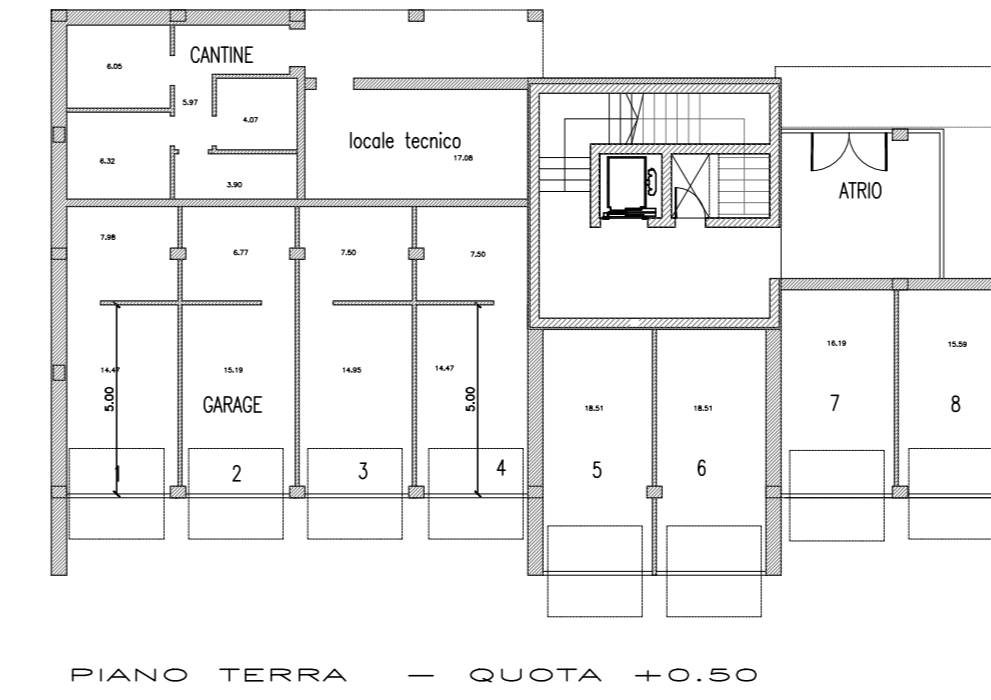
Edificio ERS 3 piani fuori terra
S.U. TOTALE 865,14 mq



Edificio ERS 3 piani fuori terra
S.U. TOTALE 380,39 mq



Edificio in linea 3 piani fuori terra
S.U. TOTALE 501,45 mq



COMUNE DI SALA BOLOGNESE
PROVINCIA DI BOLOGNA

PROGETTO URBANISTICO
ATTUATIVO
PER L'AREA DENOMINATA
ARS_SB_III

ATTUATORE

Istituto Diocesano per il
Sostanzamento del Clero

Piazz. S. Agostino 10
40124 Bologna

ATTUATORE

Parrocchia di San Biagio
di Roncole Verdi

Via Longarda 23
40121 Sala Bolognese

PIANO URBANISTICO ATTUATIVO

SPAZIO RISERVATO ALL'UFFICIO TECNICO

Progetto architettonico e coord. generale
Ing. Lorenzo Donati
Geom. Giuseppe Lucchini

Progetto opere urbanizzazione
Ing. Carlo Baletti

Progetto opere a verde
Dott. Fabio Tunioli

Relazione previsionale di clima acustico
Ing. Franca Conti

Relazione archeologica
Dott. Claudio Negrelli - Phoenix Archeologia srl

ZERO
A S S O C I A T I
Via della Piave 10/A - 40128 Bologna
Tel. 051.2611111 - Fax 051.2611111
www.zerobologna.it

SCALA

1:200

DATA

26.10.2021

CARICHI

236

TITOLO SUBPRODOTTO

TIPOLOGIE EDILIZIE

INDICATIVE - EDIFICI

IN LINEA

B.05a

FILE	N.	FASE DI LAVORO	DATA
B.01_02_03_Planimetria.dwg	1	PRESENTAZIONE PUA	20 OTTOBRE 2021
	2		
	3		
	4		
	5		