

Comune di SALA BOLOGNESE (BO)

Lavoro:
REALIZZAZIONE DI UN SOPPALCO METALLICO INTERNO AL FABBRICATO SITO IN VIA DELLA PACE N°2

Committente:
SALA IMMOBILIARE S.r.l.
 Via S. Antonio, 3
 Sala Bolognese (BO) - 40010
 p.iva 02125530376

PROGETTO STRUTTURALE

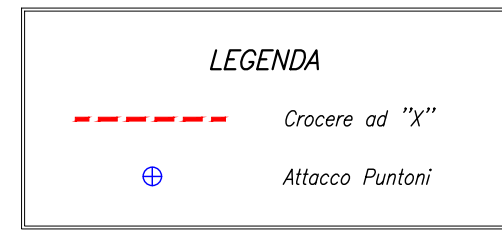
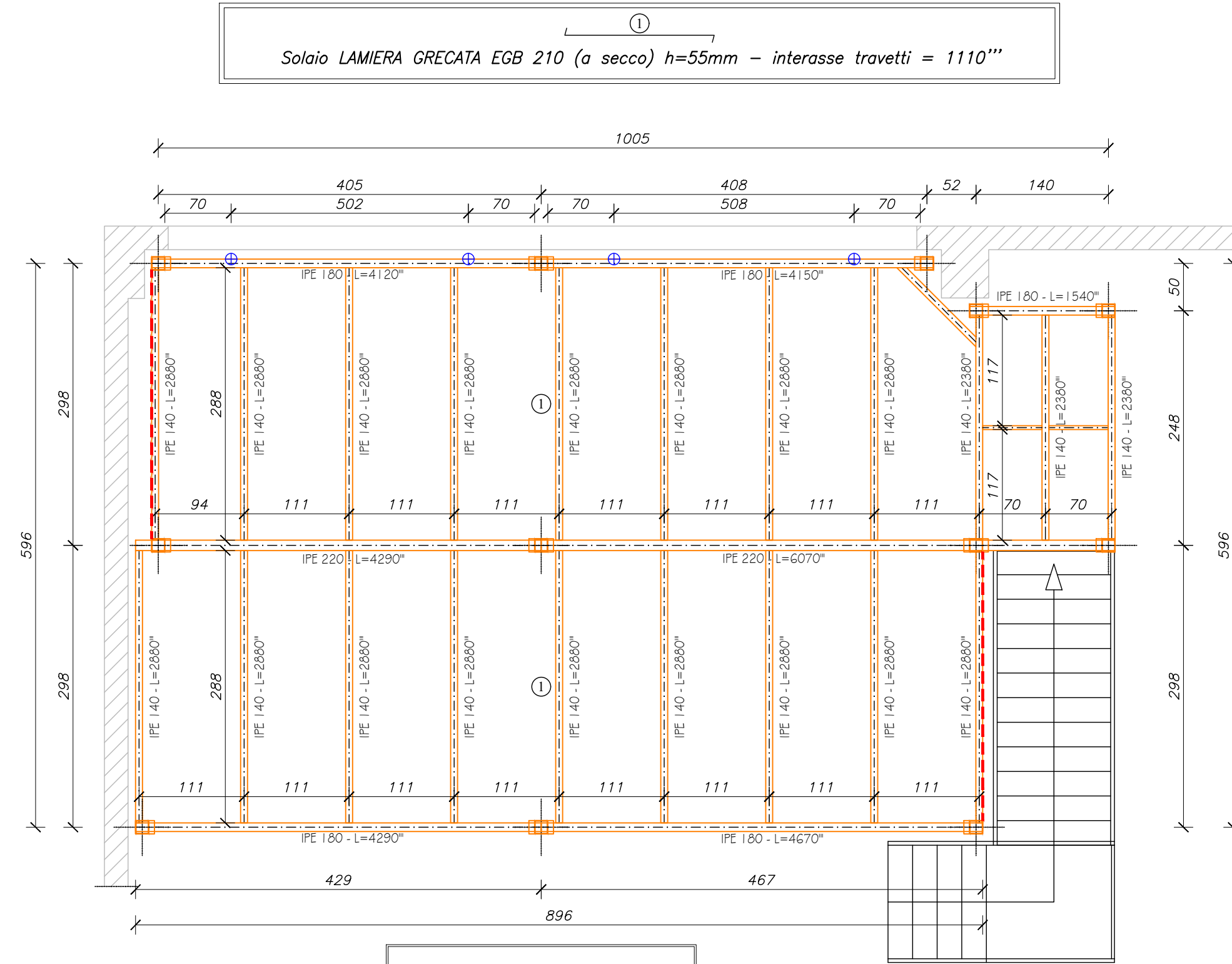
Progettista delle Strutture:
 Ing. Claudio Contini

Ufficio tecnico:

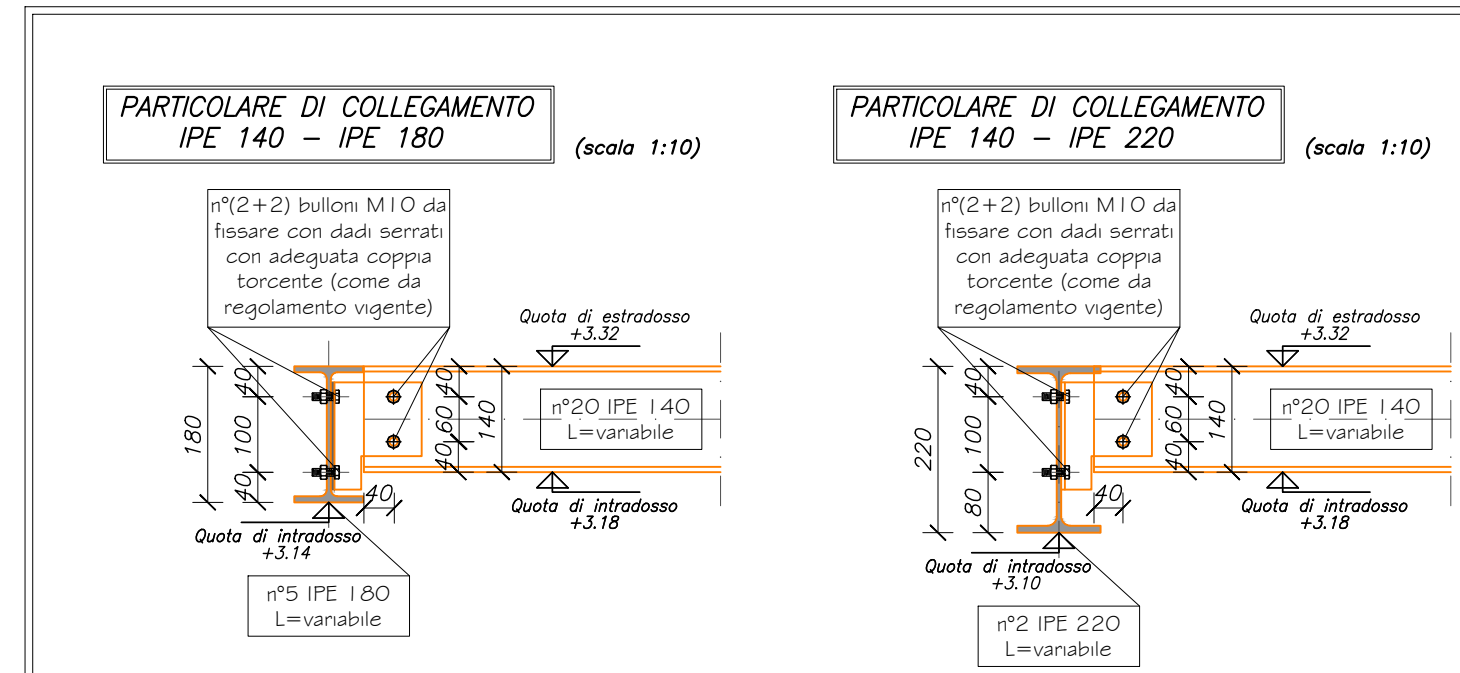
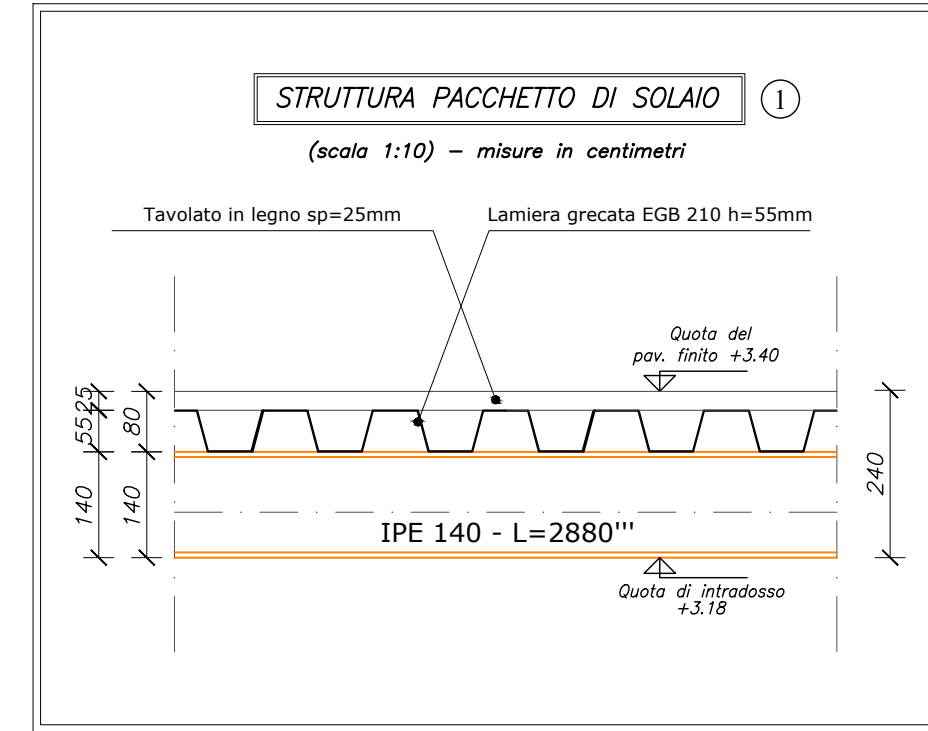
Tavola:
02 PIANTA SOPPALCO
 PIANTA, SEZIONI E PARTICOLARI

1:50 - 1:10
 15 Giugno 2022

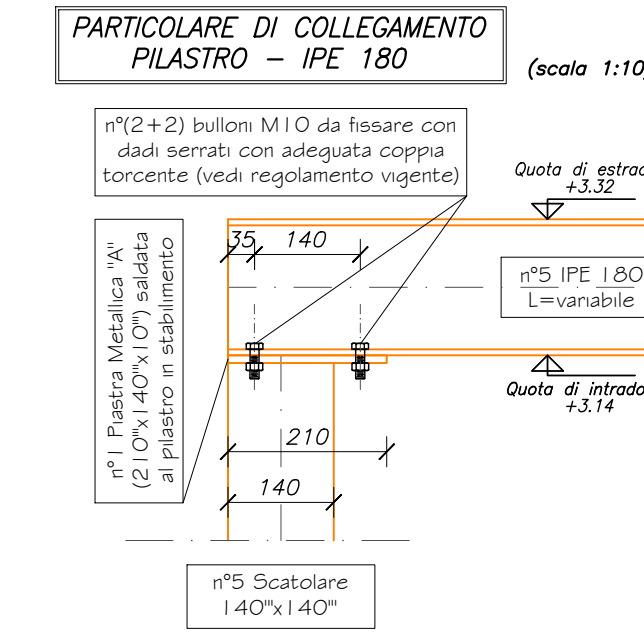
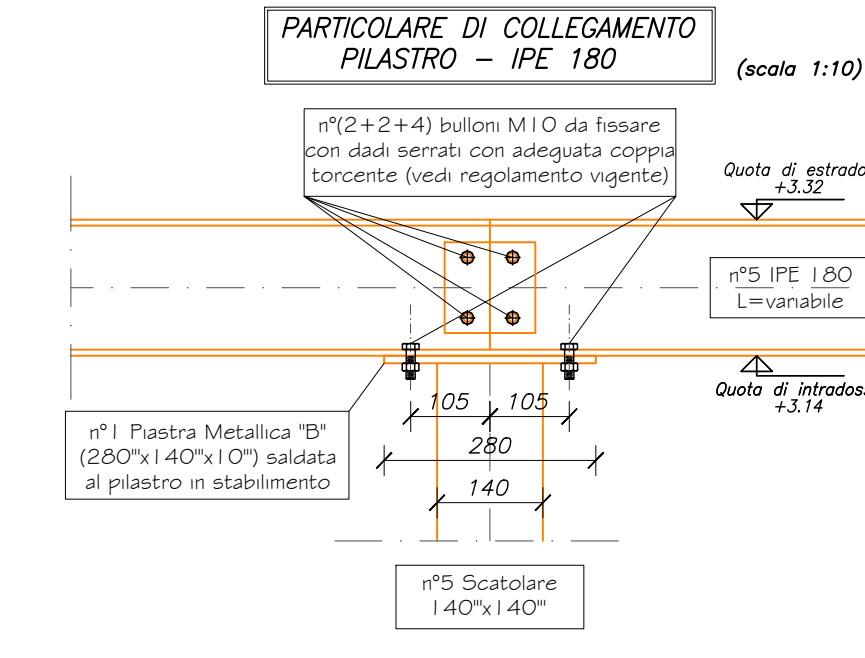
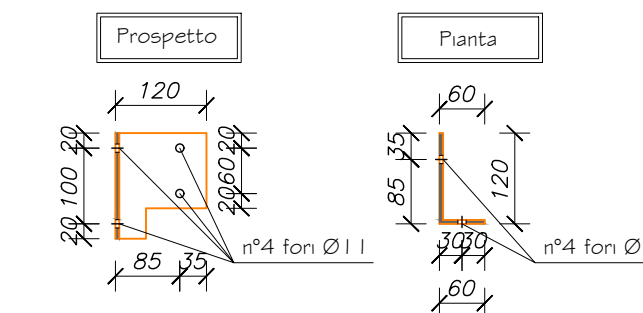
PIANTA SOPPALCO (1:50)



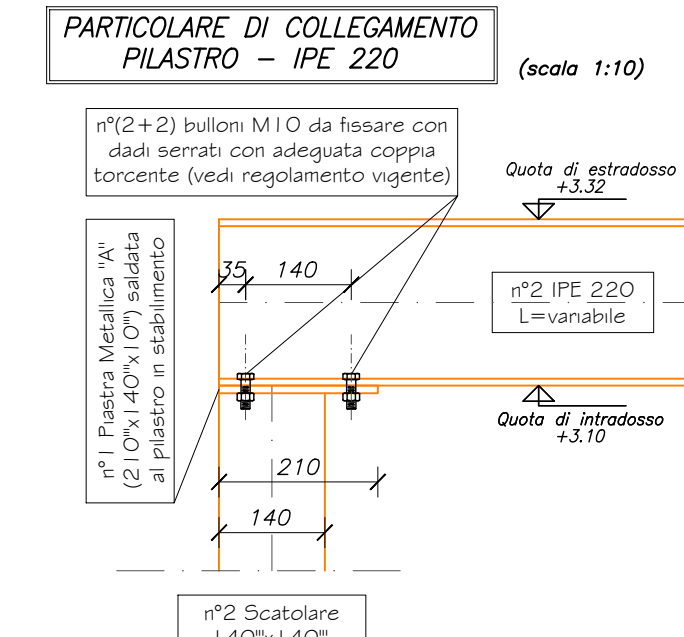
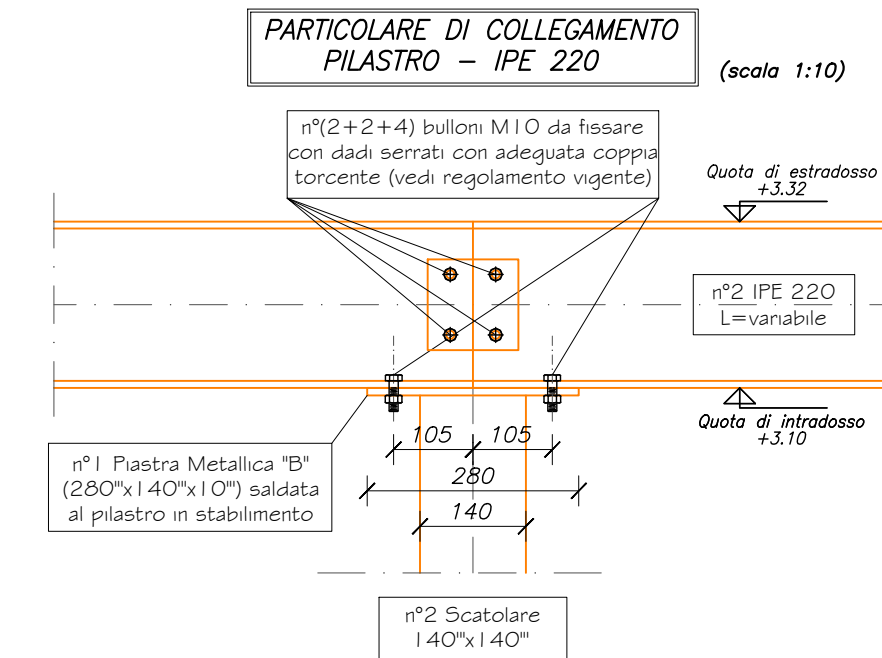
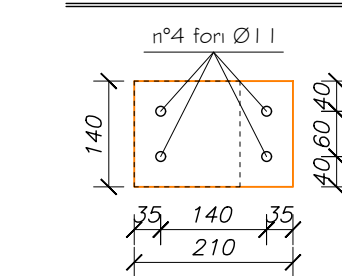
n° Id.	PIANO	TIPOLOGIA SOLAIO	G_1 peso proprio	G_2 perm. portati	Q_{k1} var. dominante	Q_{k2} var. secondaria
1	SOLAIO SOPPALCO : CAT. B1 (uffici)	LAMIERA GRECATA EGB 210	0.15 KN/mq	0.40 KN/mq	2.00 KN/mq	----



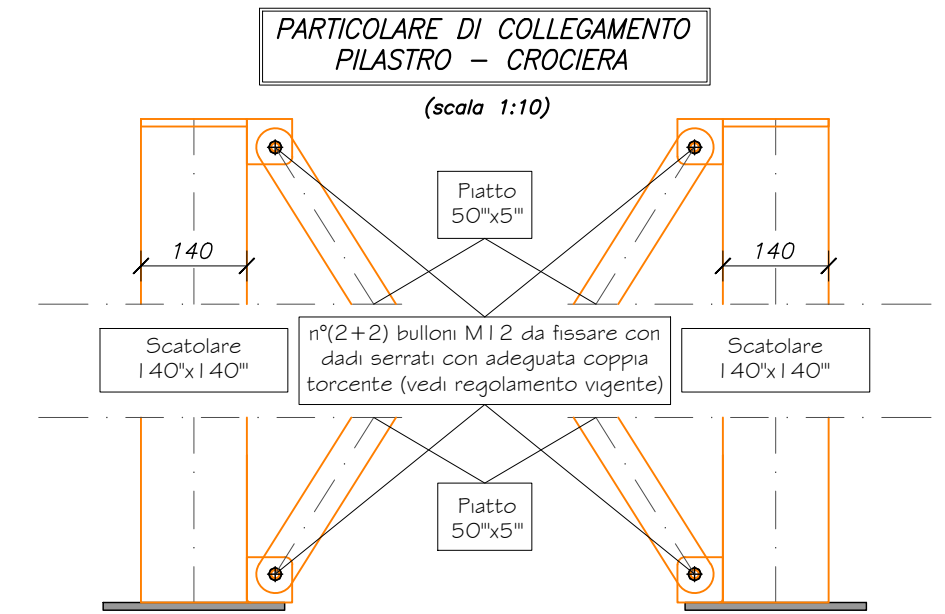
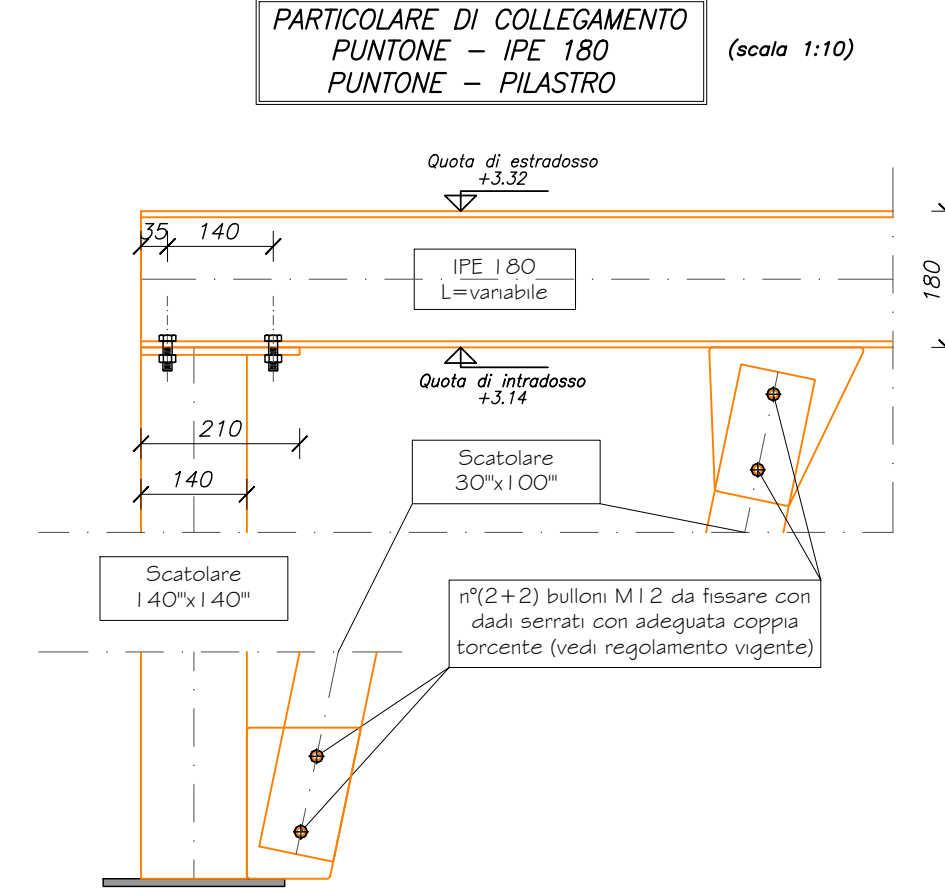
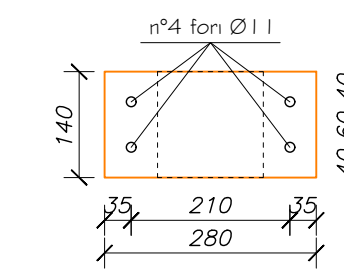
DETTAGLIO ELEMENTO DI COLLEGAMENTO



PIASTRA DETTAGLIO "A"



PIASTRA DETTAGLIO "B"



PRESCRIZIONE MATERIALI:

ACCIAIO DA CARPENTERIA : S275JR $f_{yk} = 275 \text{ N/mm}^2$; $f_{tk} = 430 \text{ N/mm}^2$

BULLONI : CLASSE 8.8 $f_{yk} = 640 \text{ N/mm}^2$; $f_{tk} = 800 \text{ N/mm}^2$
 (bulloni da serrare mediante un'adeguata coppia torcente come da regolamento)

SALDATURE: saldature basiche continue "a completo ripristino" eseguite con elettrodi E44 CL2 oppure CL3